

HISTORY OF MINING IN HONG KONG



23rd April 2015

Hong Kong Regional Group, Geological Society of London

Jackie C.T. Chu

SUPPORTED BY

PROJECTERRAE

CONTENT

- Minerals in Hong Kong
- Mines Site in Hong Kong



MINERALS IN HONG KONG

- Galena
 - Lin Ma Hang
 - Mui Wo
 - Lead Mine Pass
- Wolframite
 - Needle Hill
 - Sheung Tong
 - Castle Peak
- Magnetite
 - Ma On Shan
 - Sha Lo Wan
- Beryl
 - Devil's Peak
- Graphite
 - West Brother Island
- Quartz, Feldspar, Kaolin
 - Chek Lap Kok
 - Cha Kwo Ling
 - Wun Yiu



GALENA



LIN MA HANG (1860-1962)









GALENA



MUI WO (1619-1896)

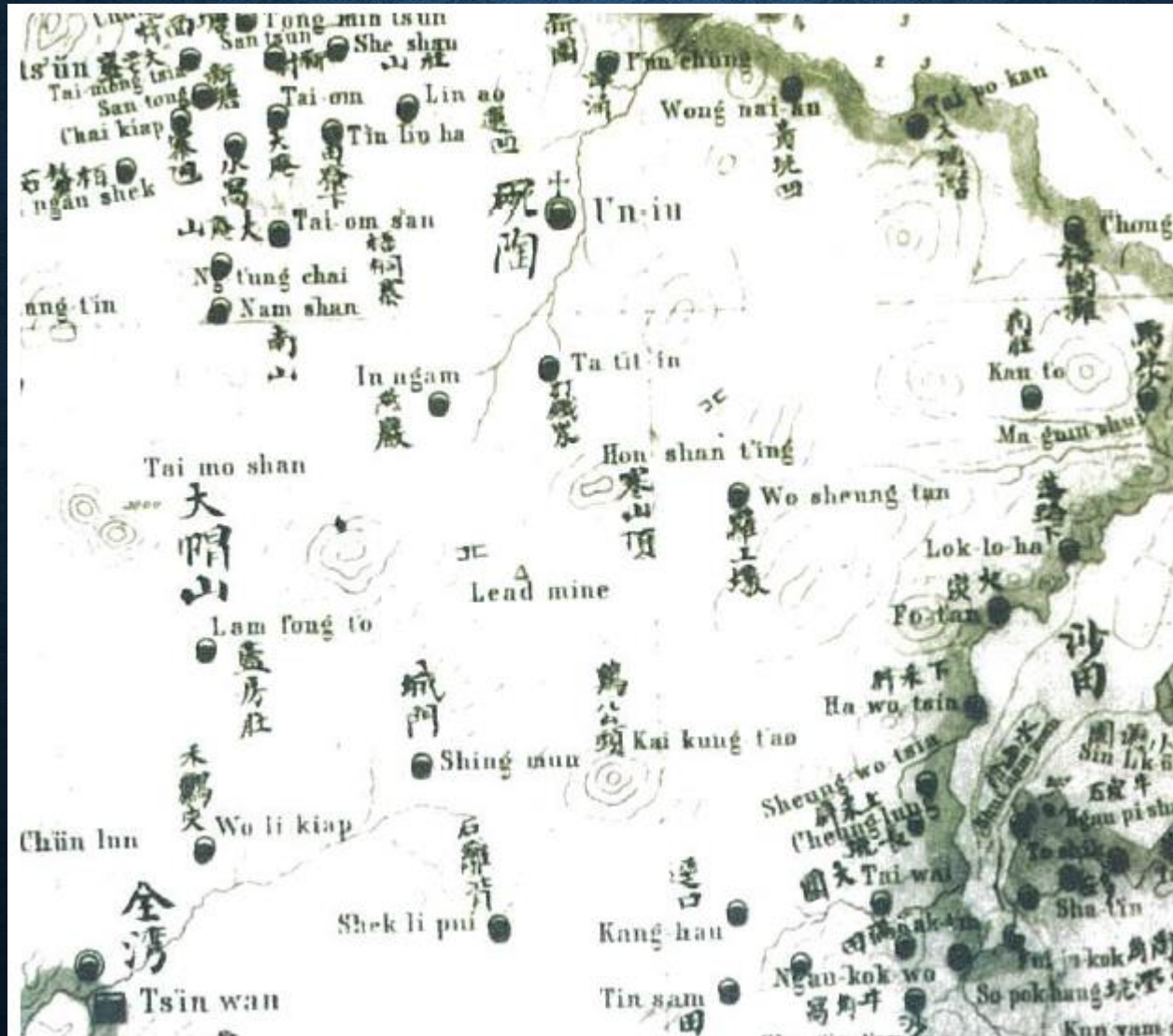




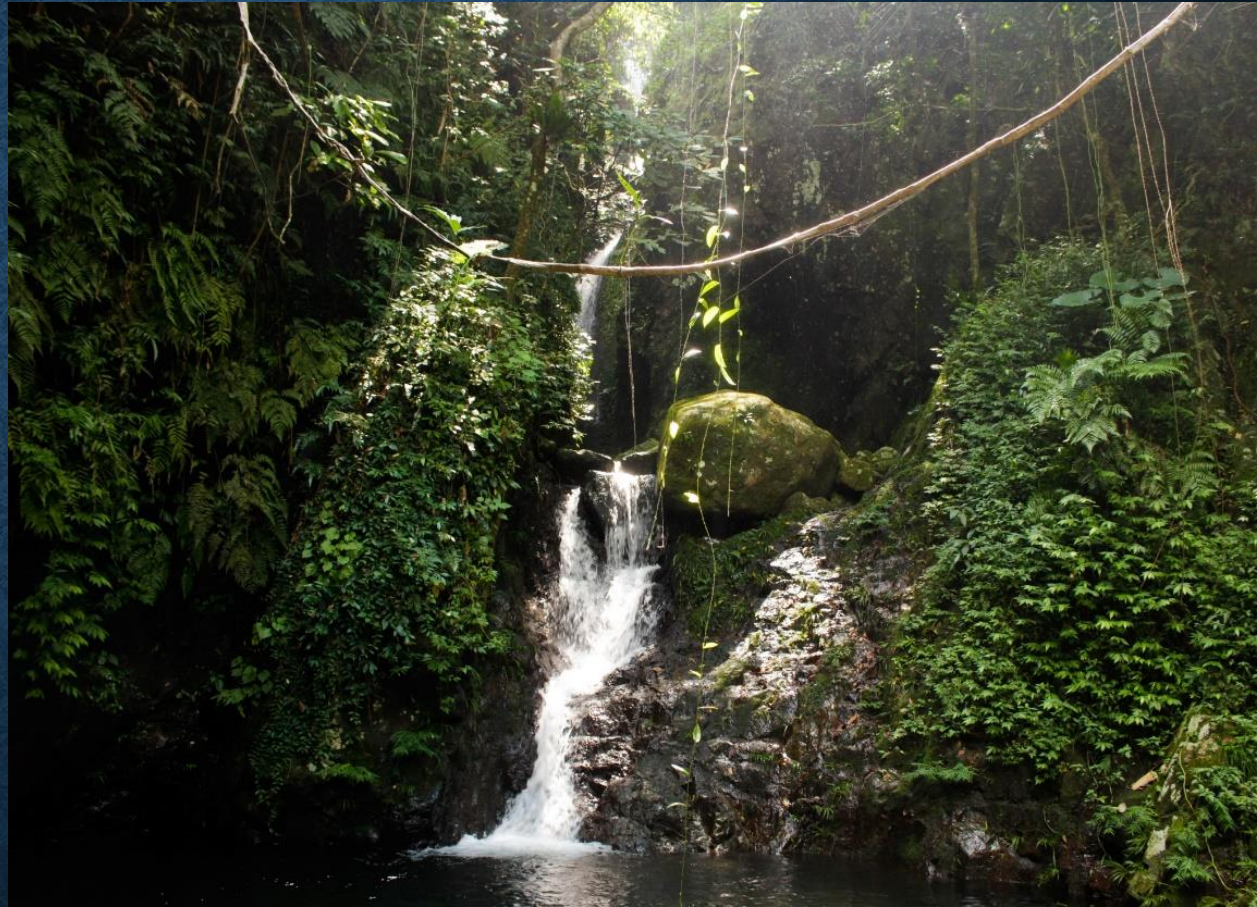
GALENA



MAP OF SAN ON DISTRICT (1866)



NG TUNG CHAI (19TH CENTURY TO UNKNOWN)



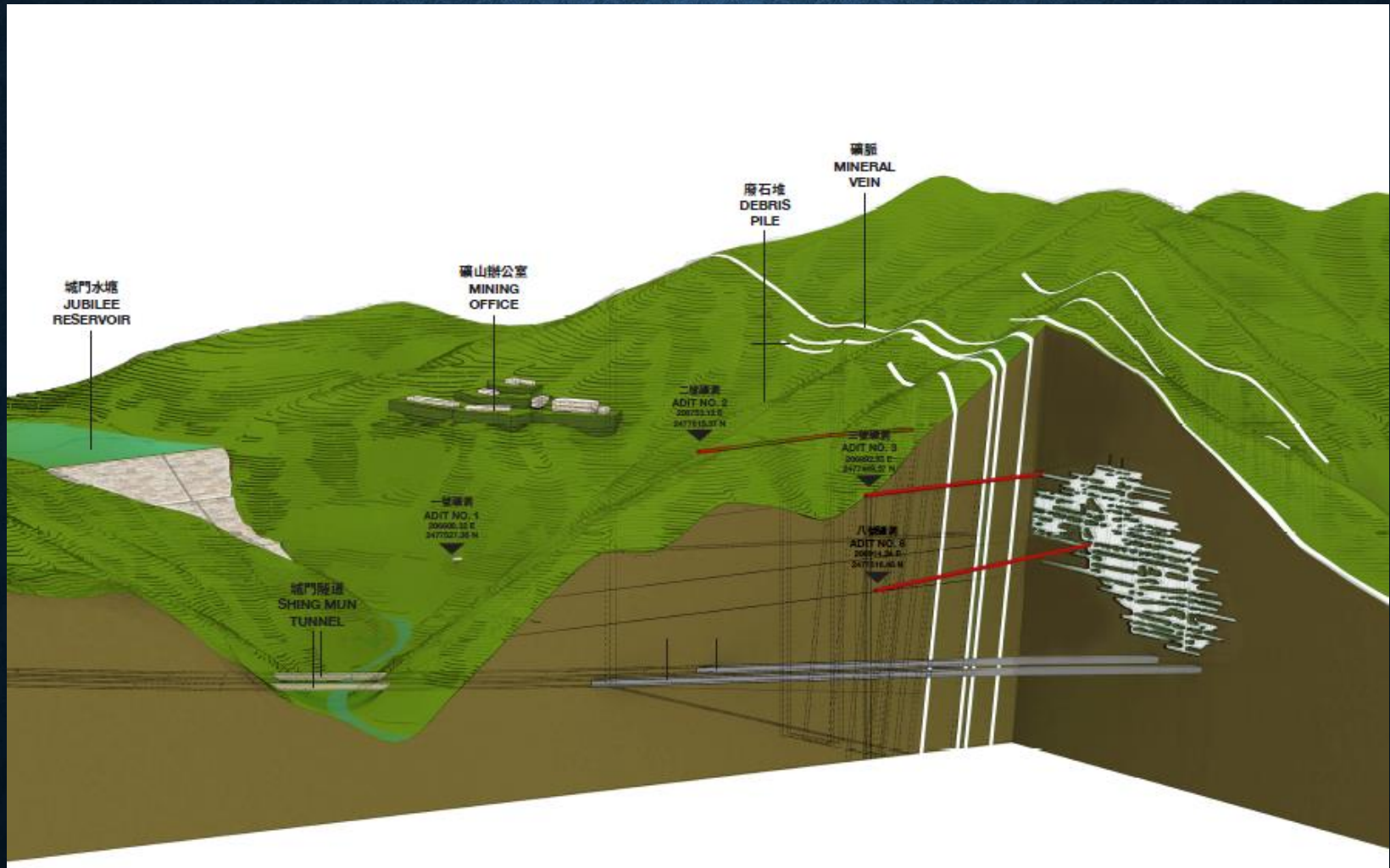
NG TUNG CHAI

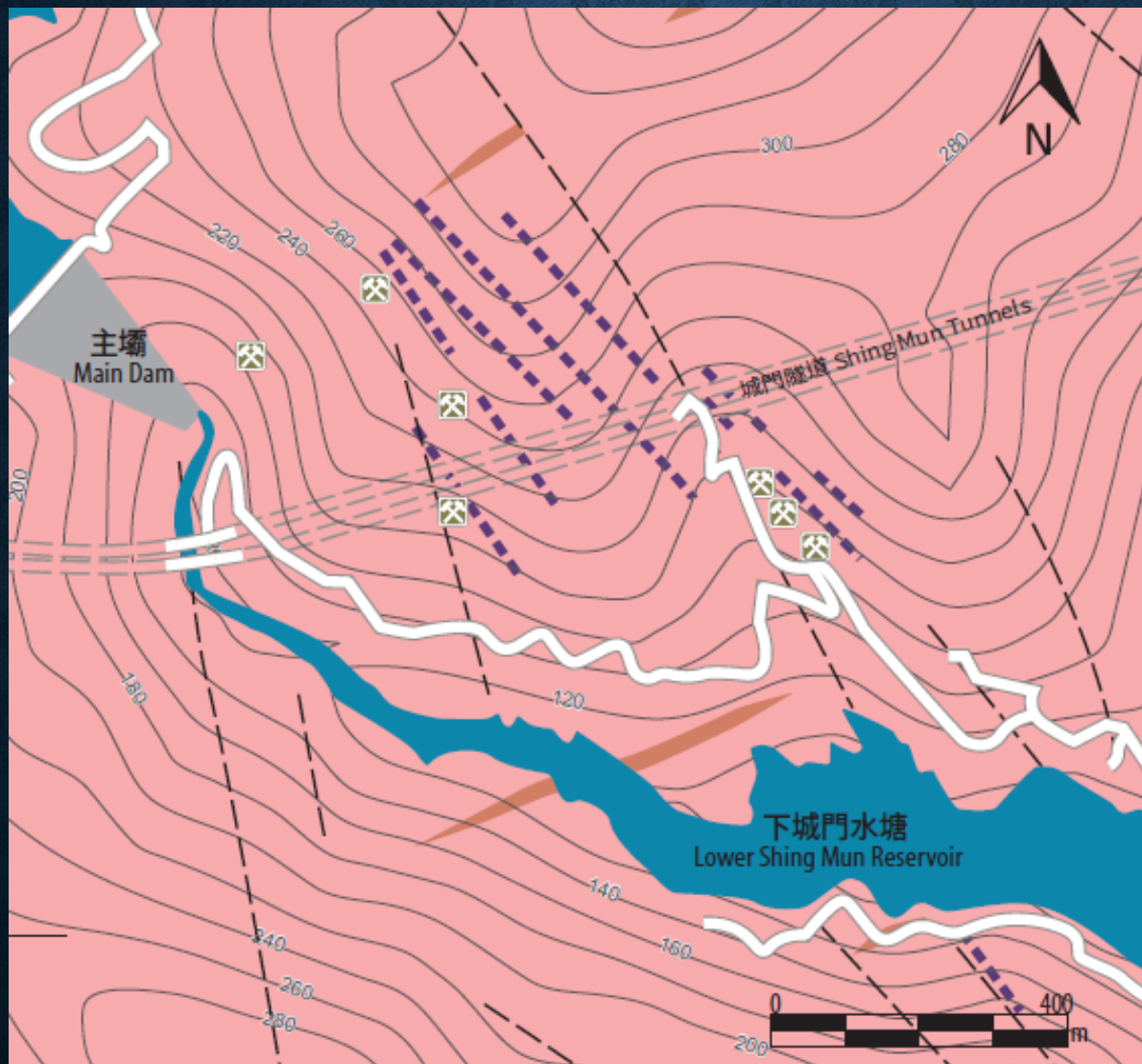


WOLFRAMITE



NEEDLE HILL (1917-1967)





圖例 Legends

-  斑狀花崗岩脈
Porphyritic Granite Dyke
-  花崗岩
Granite
-  斷層
Fault
-  石英脈
Quartz Vein
-  礦道入口
Portal
-  建築物
Settlement
-  水體
Waterbody
-  道路
Road
-  隧道
Tunnel

NEEDLE HILL (1917-1967)



WOLFRAMITE



SHEUNG TONG (1951-1970)







WOLFRAMITE



CASTLE PEAK (1952)



CASTLE PEAK (1952)



MAGNETITE



MA ON SHAN (1906-1981)



Open Pit (1906- 1959)



Underground (1953- 1981)

MA ON SHAN (1906-1981)



MA ON SHAN (1906-1981)



BERYL



DEVIL'S PEAK (1957)



DEVIL'S PEAK (1957)

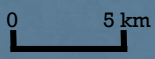


GRAPHITE

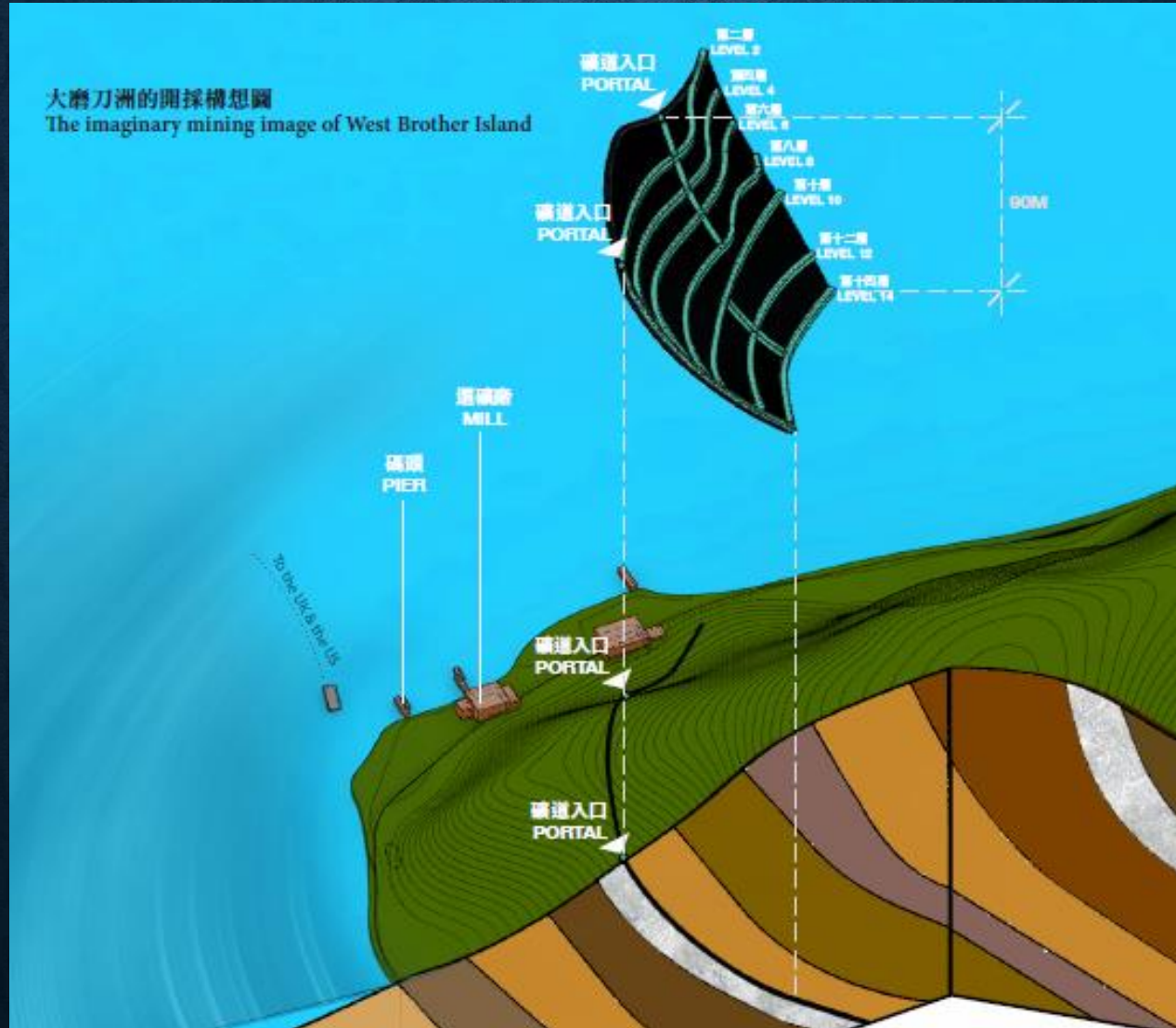


 石墨礦
Graphite Mining Location

 曾發現石墨的地點
Graphite Occurrence



WEST BROTHER ISLAND (1952-1971)



WEST BROTHER ISLAND (1952-1971)



WEST BROTHER ISLAND (1952-1971)



QUARTZ FELDSPAR KAOLIN



CHEK LAP KOK (1959-1988)



Hong Kong International Airport



Ngong Ping 360 Cable Car

QUARTZ FELDSPAR KAOLIN



CHA KWO LING (1950S-1990S)



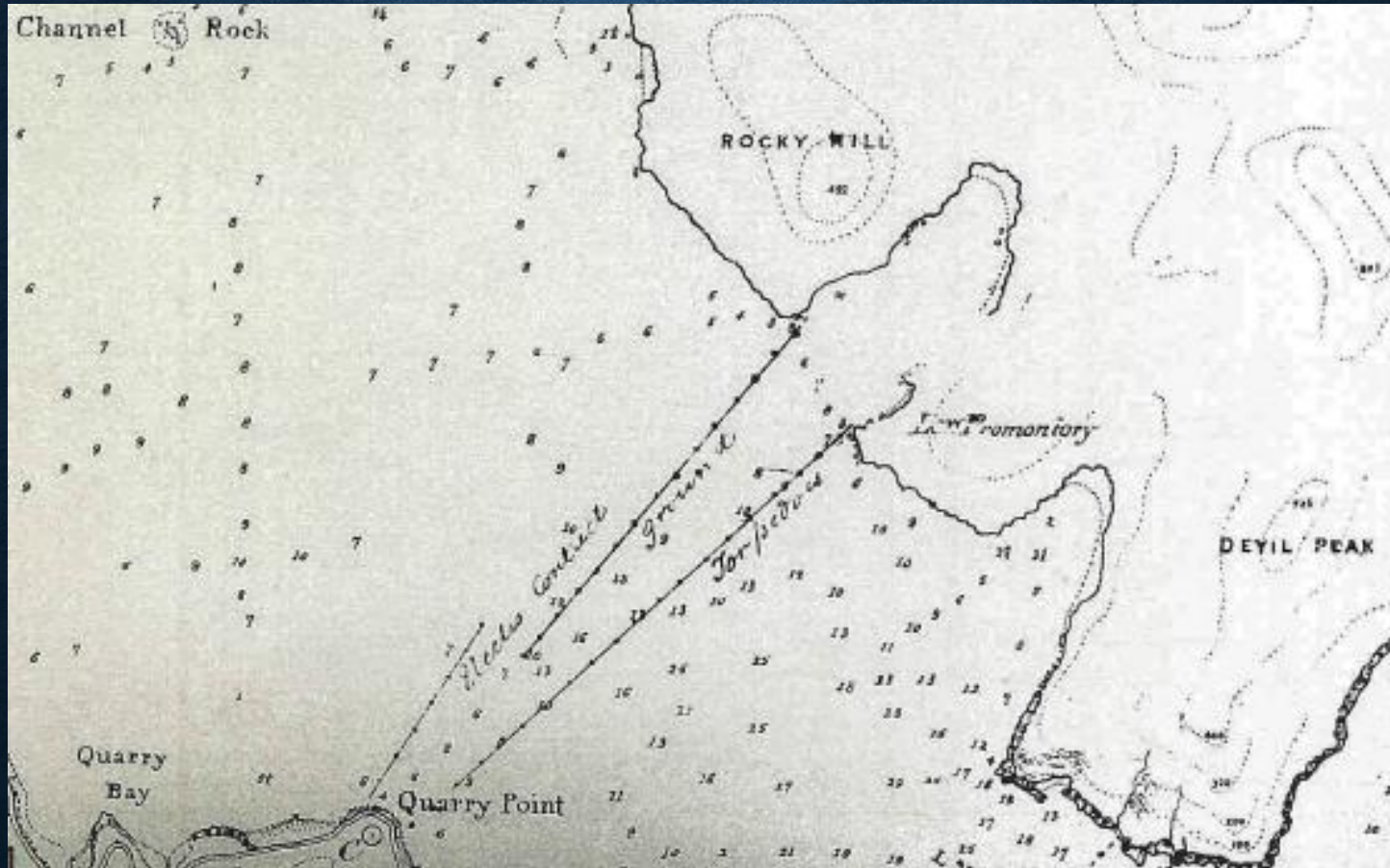
AND QUARRIES



FOUR HILLS OF KOWLOON



SEA DEFENCES MAP (1876)



LEI YUE MUN



LAM TEI



MT. BUTLER



PING SHAN



DIAMOND HILL



SUMMARY



- A high variety of minerals
- Exported to the UK, the US, Japan
- Peaks from 1950s to 1970s
- Urbanisation

UPCOMING TOURS

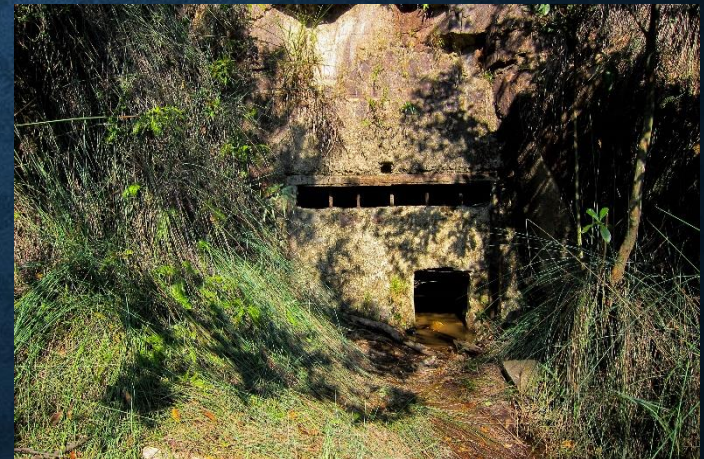
- West Brother Island Graphite Mine

- 26th April, 2105
- 10:30am-3:30pm
- Quota: 40



- Needle Hill Wolframite Mine

- 17th May, 2015
- 1:00pm-6:00pm
- Quota: 25



*Please visit www.facebook.com/erc.com.hk

REFERENCES

- Campbell S.D.G. & Sewell R.J., 1998. *A proposed revision of the volcanic stratigraphy and related plutonic classification of Hong Kong*. *Hong Kong Geologist*, Vol. 4, p1-11.
- Captain. Sir Edward Belcher, 1841. "Map of Hong Kong" Her Majesty Stationery Sulphur
- Davis S.G. and Snelgrove A.K., 1956. *Geology of the Lin Ma Hang Lead Mine, New Territories, Hong Kong*. *Mining Magazine* (February)
- Davis S.G., 1958. *Tungsten Mineralization in Hong Kong and the New Territories*. *Economic Geology* 53. Vol. 4. p481-488
- Davis S.G., 1961.a *Mineralogy and Genesis of the Wolframite ore deposits, Needle Hill Mine, New Territories, Hong Kong*. *Economic Geology* 56. p1238-1249
- Davis S.G., 1961.b *Mineralogy of the Ma On Shan Iron Mine, Hong Kong*. *Economic Geology* 36. No.3
- Hui S.F., 1978. *Mining of the wolframite deposit of Needle Hill Mine, Hong Kong*. *Institution of Mining and Metallurgy*. *Tours Guidebook*, 11th Commonwealth Metallurgical Congress, Hong Kong
- Knapp J.H., 1964. *Mining in Hong Kong. Symposium on land use and mineral deposits in Hong Kong, Southern China and South-East Asia*. University of Hong Kong. Golden Jubilee Congress,. p155-162.
- Peng C.J., 1978. *Hong Kong Minerals*. Hong Kong Government Printer, 81pp
- Robert K.J. and Strange P.J., 1991. *The Geology and exploitation of the Needle Hill Wolframite deposit*. *Geological Society of Hong Kong Newsletter* Vol. 9 No.3 p 29-40
- Ruxton B.P., 1955. *Graphite in Hong Kong*. *Far Eastern Economic Review* Vol. 18 No. 4, p98-100
- Sewell R.J., Campbell S.D.G., Fletcher C.J.N., Lai K.W. and Kirk P.A., 2000. *The Pre-Quaternary Geology of Hong Kong*. Hong Kong Geological Survey. 181pp.
- Sewell R.J., Tang L.K. and Shaw R., 2009. *Hong Kong Geology – A 400-million year journey*. Civil Engineering and Development Department, The Government of Hong Kong SAR. 157pp
- Shibata T., 1964. *Development Plan of Ma On Shan Iron Mine, Hong Kong*. *Economic Geology of Hong Kong*. p52-59
- *The Hong Kong Gazette* 香港憲報, 1841. Vol. I (1st May,1841) No. 1
- Woods N.W. and Langford R.L., 1991. *The Geology and Exploitation of the West Brother island graphite deposit*. *Geological Society of Hong Kong Newsletter* Vol. 9, No.2 p24-35

THANK YOU!